

INSTALLATION INSTRUCTIONS for M38 & M68 "T" UPGRADE Tamper Resistance Upgrade Kit for Model M38 and M68 Magnalocks

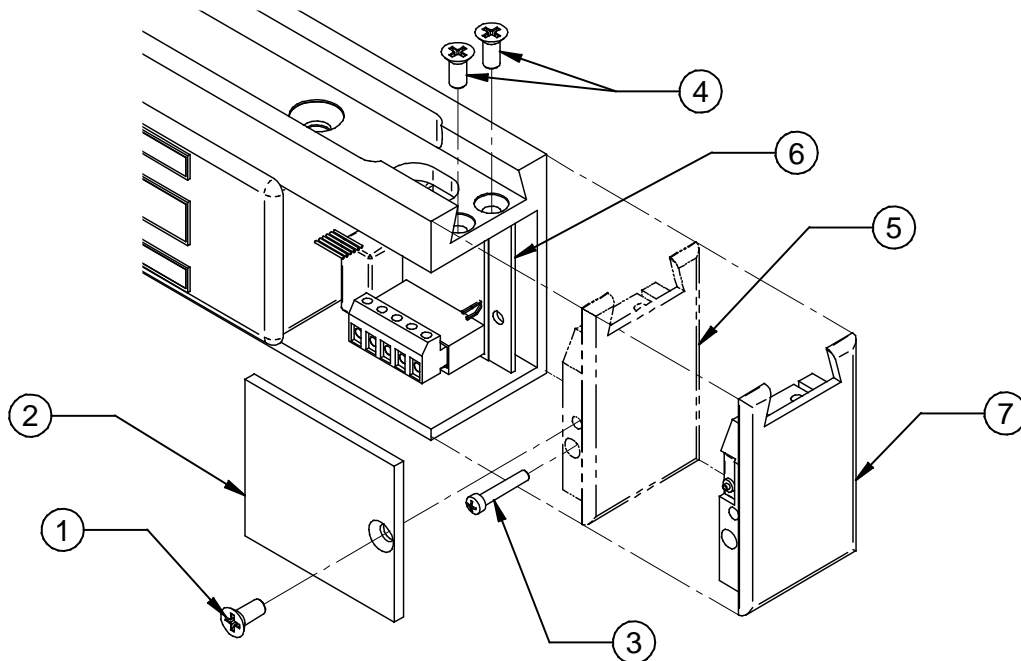


Figure 1 - (Exploded View of M38)

Note: If the lock is currently installed, it must be removed from the mounting bracket to provide access to the screws retaining the lock housing end cap.

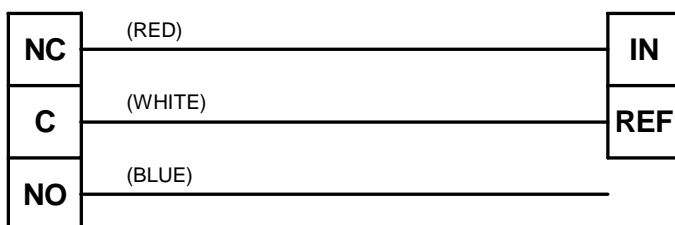
Using **Figure 1** and the following step-by-step installation instructions, replace the existing right lock housing end cap with the Tamper Resistant version of the cap.

1. Remove the existing right end cap (**Item #5**) of the lock housing as follows:
 - a. Using a #1 Phillips screwdriver, remove the 8-32 UNC flat head screw (**Item #1**) holding the lock housing front cover (**Item #2**) in place. Remove the cover and set the cover and the screw aside for later reassembly.
 - b. Using a #1 Phillips screwdriver, remove the 4-40 UNC fillister head screw (**Item #3**) that secures the PC board (**Item #6**) from the recessed hole in the existing right end cap.
 - c. Using a #2 Phillips screwdriver, remove the two (2) 8-32 UNC flat head screws (**Item #4**) holding the end cap in place. Set the screws aside for reuse.
 - d. Carefully slide the end cap away from the side of the lock housing to disengage it from the edge of the PC board. Set the removed end cap aside.
2. Install the replacement right end cap (with tamper resistance option) to the lock housing as follows:
 - a. Remove the new end cap (**Item #7**) from packaging.
 - b. Carefully align the slot of the new end cap with the edge of the PC board and slide the end cap into place in the right end of the lock housing.
 - c. Using a #2 Phillips screwdriver, install the two (2) 8-32 UNC flat head screws (**Item #4**) (removed in step 1.c above) to secure the new end cap into place.
 - d. Using a #1 Phillips screwdriver, insert the 4-40 UNC fillister head screw (**Item #3**) (removed in 1.b above) into the recessed hole in the end cap and tighten the screw to secure the PC board.
 - e. Reinstall and secure the lock housing to the mounting bracket and complete all wiring as required.
 - f. Position the lock housing front cover in place over the wiring access compartment and using a #1 Phillips screwdriver, secure the cover by installing the 8-32 UNC flat head screw (**Item #1**) through the hole in the cover.

**SERIES M38 OR M68 WITH "T" OPTION
(TAMPER INDICATION SWITCH)**

**"T" OPTION OUTPUT
SPDT DRY CONTACT**

**ACCESS CONTROL SYSTEM
LOCK TAMPER STATUS INPUT**



CONTACT RATING: 2 Amps @ 24 Volts

Figure 2 - (Wiring Diagram)