

# 6400R - PANIC NARROW RIM EXIT DEVICES WITH BLADE STOP STRIKE

TEMPLATE: 639317

REV. 1 4/7/22

## 6400 SERIES EXIT DEVICES USING SNB OR SURFACE MOUNT FASTENERS

### DEVICE

**MACHINE SCREWS:**  
USE #7 OR 13/64" DRILL AND 1/4-20 TAP

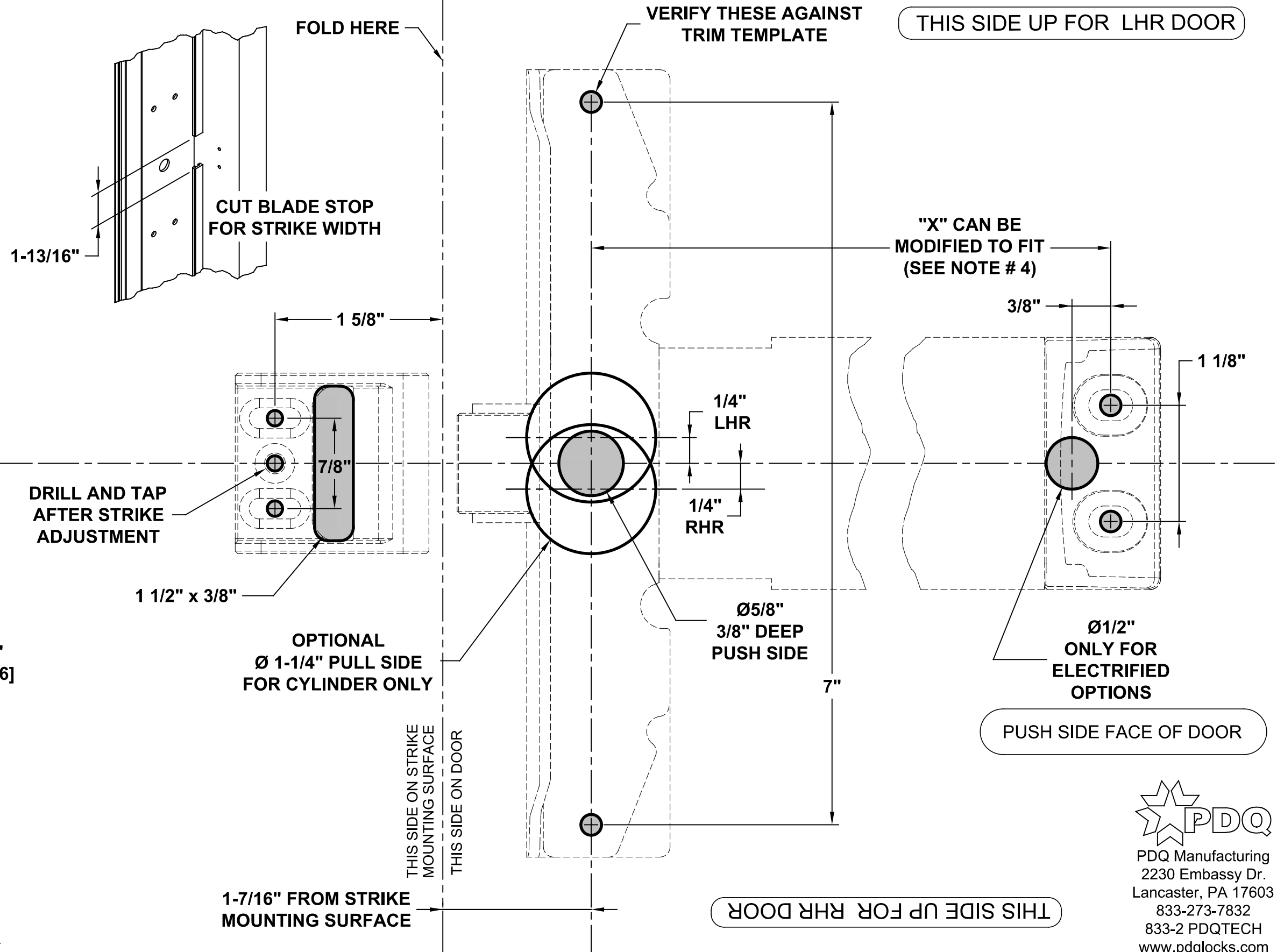
**SEX NUTS:**  
USE 3/8" DRILL PULL SIDE  
USE 9/32" DRILL PUSH SIDE

### STRIKE

**MACHINE SCREWS:**  
USE #25 OR 5/32" DRILL AND #10-24 TAP

### NOTES:

1. VERIFY PRINTED TO SCALE
2. SEX NUTS MAY BE REQUIRED FOR UNREINFORCED DOORS OR COMPOSITE FIRE DOORS. CONSULT DOOR MANUFACTURER'S RECOMMENDATIONS
3. SEE TRIM TEMPLATE (IF APPLICABLE) FOR RELATED MACHINING DETAILS
4. DIMENSION "X" SIZED FOR DOOR. REFER TO DEVICE INSTRUCTIONS WHEN CUTTING DOWN FOR NARROWER OPENING
5. CHECK PDQ WEBSITE FOR MOST RECENT REVISION WWW.PDQLOCKS.COM
6. MINIMUM STILE WIDTH: 2 1/8"



PDQ Manufacturing  
2230 Embassy Dr.  
Lancaster, PA 17603  
833-273-7832  
833-2 PDQTECH  
www.pdqlocks.com