

CG0128 Pivot Set

Center Hung

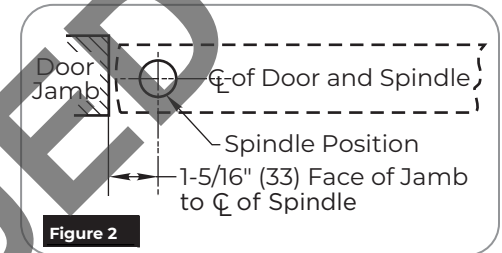
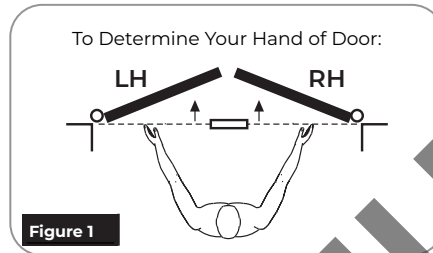
Installation Instructions

⚠️ WARNING

This product can expose you to lead which is known to the state of California to cause cancer and birth defects or other reproductive harm. For more information go to www.P65warnings.ca.gov.

Ce produit peut vous exposer au plomb qui, dans l'état de la Californie, est reconnu pour causer le cancer, des anomalies congénitales ou d'autres problèmes de reproduction. Pour plus d'informations, visitez: www.P65warnings.ca.gov.

IMPORTANT: It is responsibility of door and frame manufacturers to check hardware schedule and prepare doors and frames. The following instructions cover field prep.



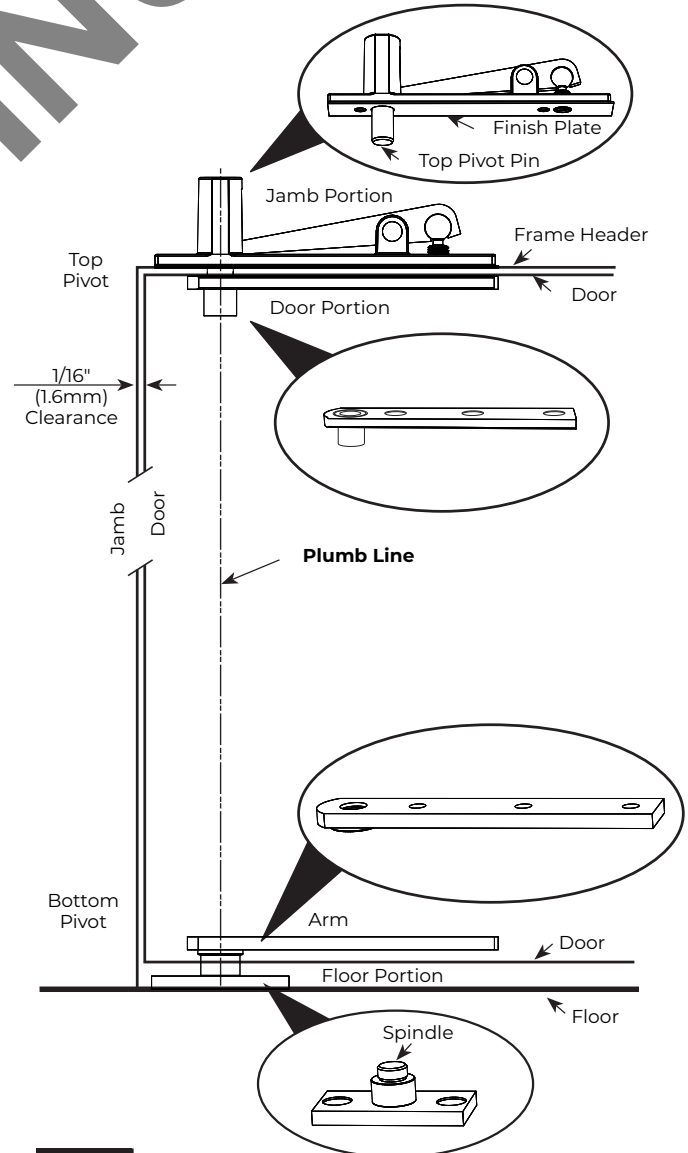
1. Prepare door and opening.

1. Determine hand of door for proper placement of pivot set. (Figure 1)
2. Confirm pivot side of door frame is both plumb and straight with respect to frame rabbet and frame face surfaces.
3. Mark frame header and door for top pivot (Figure 2) Using template PS30221, note the requirement for door radius on heel edge of door.
4. Install jamb portion and finish plate of top pivot into frame header using two (2) (2) 1/4-20 X 3/4" FHMS or #14 X 1-1/2" FHWS. Refer to template PS30221. (Figure 3)
5. Using Norton Rixson alignment tool 2604, secure plumb line to jamb portion top pivot pin. (Figure 3)
6. Using plumb line, locate bottom pivot floor portion spindle centerline. With bottom pivot floor portion as a template, mark location of mounting holes. (Figure 3)

NOTE: Confirm floor portion placement using template PS30221 with respect to frame rabbet and frame face. If not accurate, frame may not meet straight and plumb requirements of step 2 above.

7. Radius heel edge of door for 1/16" (1.6mm) minimum clearance through entire opening per template PS30221.
8. **NOTE:** Maximum radius is determined by pivot point. Radius = pivot point to frame dimension less 1/16" (1.6mm). Template shows 1-1/4" (31.8mm) radius.
9. Mortise and prepare holes in top of door for top pivot door portion and in bottom of door for bottom pivot arm.

NOTE: Mortise depth in bottom of door must be coordinated with required clearance between door bottom and floor. 5/16" (7.9mm) Min. Clearance = 11/16" (17.5mm) Mortise depth. 11/16" (17.5mm) Max. Clearance = 1/4" (6.4mm) Mortise depth



2. Install pivot set.

1. Install floor portion of bottom pivot securely to floor using two (2) 1/4-20 x 3/4" FHMS or #14 x 1-1/2" FHWS and provided lead expansion shields. (Figure 6)

NOTE: Care must be taken that bottom pivot is level.

NOTE: Center of top pivot pin must align with bottom pivot floor portion spindle. If door and frame is pre-prepped, follow steps 5 and 6 of "Prepare door and opening" to confirm this alignment requirement.

2. Install door portion of top pivot in door using three (3) 1/4-20 x 3/4" FHMS or #14 x 1-1/2" FHWS. (Figure 4) Refer to template PS30221.
3. Install door arm in bottom of door using three (3) 1/4-20 x 3/4" FHMS or #14 x 1-1/2" FHWS. (Figure 5)

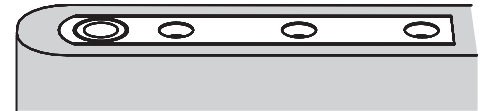


Figure 4

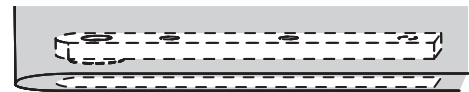


Figure 5

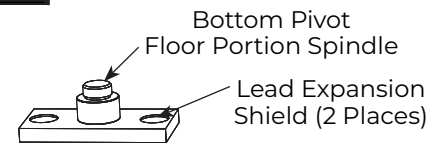


Figure 6

3. Hang door.



Caution: Know weight of door before attempting to install. Determine proper equipment needed to prevent door from falling. (Figure 7)

1. Set door on floor pivot spindle and tilt top of door pivot portion into top jamb portion. (Figure 7)
2. Engage top pivot pin by turning pin retracting screw clockwise. (Figure 8)

To remove door:



Caution: Know weight of door before attempting removal from frame. Determine proper equipment needed to prevent door from falling. (Figure 7)

1. Open door enough to gain access to pin retracting screw.
2. Secure door so it will not fall from opening during following steps.
3. Turn top pivot pin retracting screw counter clockwise to disengage top pivot pin.
4. With door securely held, carefully allow door to rotate on bottom pivot toward closed position.
5. Leaning door at header to allow top of door to clear frame rabbet, lift door to clear bottom pivot spindle.

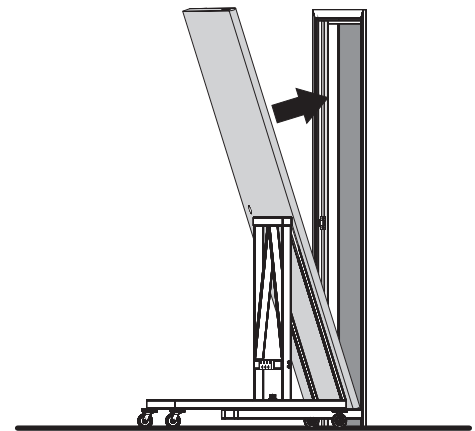


Figure 7

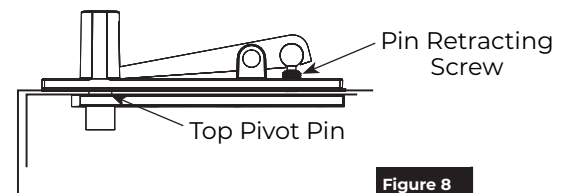
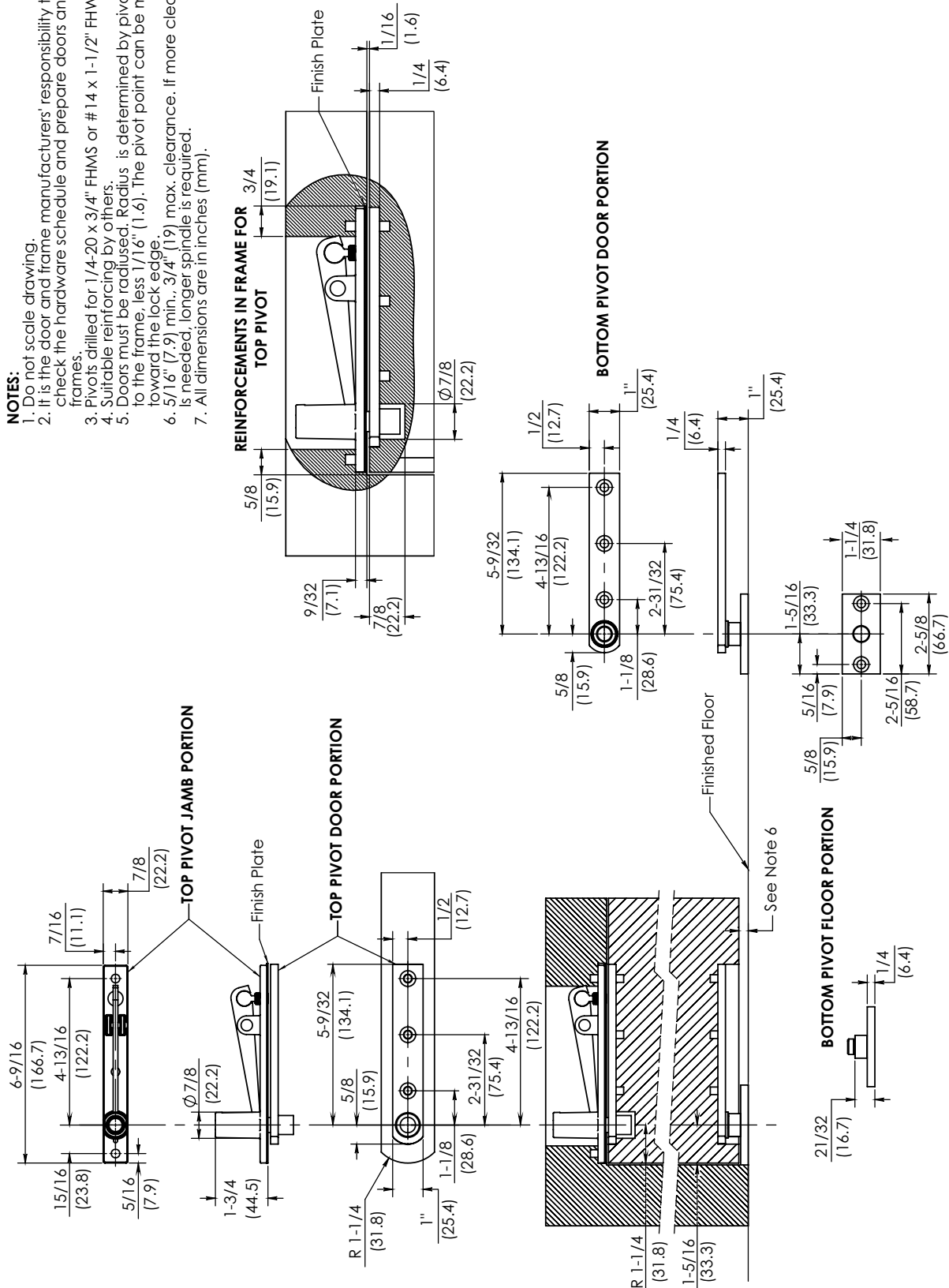


Figure 8

CG0128 Pivot Set

Template PS30221

- NOTES:**
1. Do not scale drawing.
 2. It is the door and frame manufacturers' responsibility to check the hardware schedule and prepare doors and frames.
 3. Pivots drilled for 1/4-20 x 3/4" FHMS or #14 x 1-1/2" FHWS.
 4. Suitable reinforcing by others.
 5. Doors must be radiused. Radius is determined by pivot point to the frame, less 1/16" (1.6). The pivot point can be moved toward the lock edge.
 6. 5/16" (7.9) min., 3/4" (19) max. clearance. If more clearance is needed, longer spindle is required.
 7. All dimensions are in inches (mm).



The ASSA ABLOY Group is the global leader in access solutions. Every day we help people feel safe, secure and experience a more open world.



ASSA ABLOY

Technical Product Support:
Monroe, NC 28112 USA
Phone: 877.974.2255 ext: 2
Techsupport.NortonRixson@assaabloy.com
NortonRixson.com

Norton Rixson is a brand associated with ASSA ABLOY Accessories and Door Controls Group, Inc., an ASSA ABLOY Group company. Copyright © 2022, ASSA ABLOY Accessories and Door Controls Group, Inc. All rights reserved. Reproduction in whole or in part without the express written permission of ASSA ABLOY Accessories and Door Controls Group, Inc. is prohibited.

Approved 2022-05-16

IS-CG0128 Rev 2 05/22