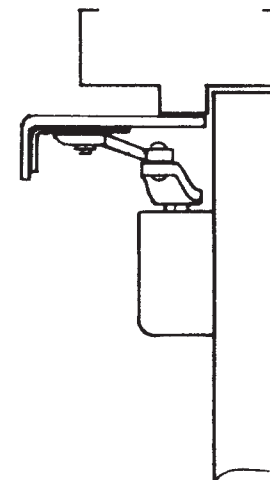
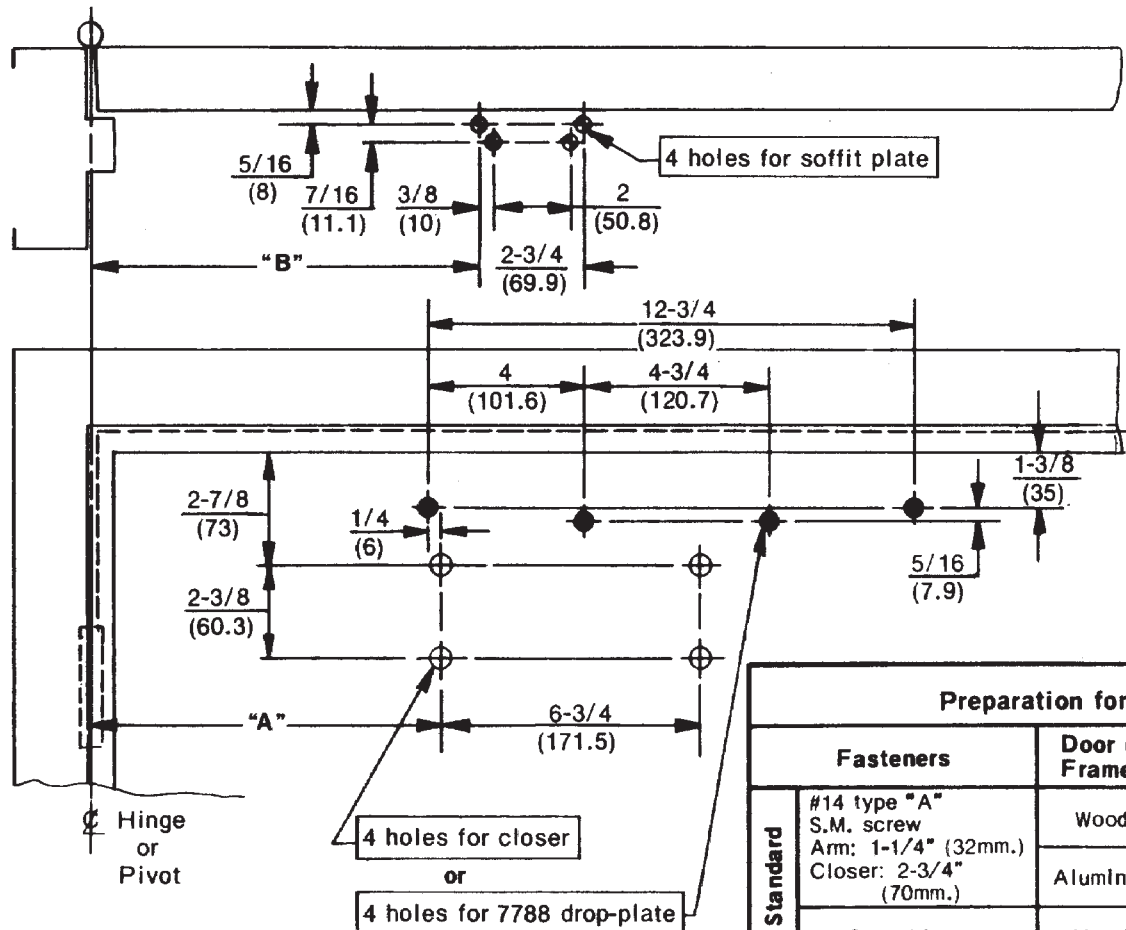


| Opening | Dim. "A" | | Dim. "B" | |
|--------------|----------|-----|----------|-----|
| | inches | mm | inches | mm |
| To 100° | 8-3/4 | 222 | 9-1/4 | 235 |
| 101° to 130° | 7-1/4 | 184 | 7-3/4 | 197 |
| 131° to 150° | 6-1/4 | 159 | 6-3/4 | 171 |
| 151° to 180° | 5-1/4 | 133 | 5-3/4 | 146 |



Do not scale drawing
Left hand door shown
Dimensions are in inches
(mm.)

Caution: Door swing may be limited by door, frame, wall, or hardware conditions.

Hollow-metal doors require channel or box-type reinforcement when thru-bolt mount is specified.

Sex-bolts required for wood or plastic faced fire-door mounting.

Minimum thickness recommended for reinforcements in hollow-metal doors and frames: .1046" (2,66mm.) unless otherwise noted.

| Preparation for Fasteners | | | |
|---------------------------|--------------------------------------------------------------------------|------------------|-------------------------------------------------------------------------------------------------------------------|
| | Fasteners | Door or Frame | Drill-Sizes |
| Standard | #14 type "A" S.M. screw Arm: 1-1/4" (32mm.) Closer: 2-3/4" (70mm.) | Wood | 3/16" (4.30mm.) |
| | | Aluminum | 7/32" (5.50mm.) |
| | 1/4-20 machine-screw | Metal | drill: #7 (.201" dia.) tap: 1/4-20 |
| Optional | Sex-nuts and bolts | Hollow-Metal | 9/32" (7.00mm.) through; 3/8" (9.50mm.) on door or transom-face opposite to closer |
| | | Aluminum or Wood | 3/8" (9.50mm.) through |
| | Through-bolts and grommet-nuts | All | 9/32" (7.00mm.) through; 3/8" (9.50mm.) dia. x 3/8" (10mm.) deep on door or transom-face opposite to closer |

**P7500H or P7700H Series Door Closers
With or Without 7788 Drop Plate
Parallel Arm Installation With Hold Open**

Norton

ASSA ABLOY

www.nortondoorcontrols.com

TEMPLATE NUMBER

7377-0211

DATE

07-08