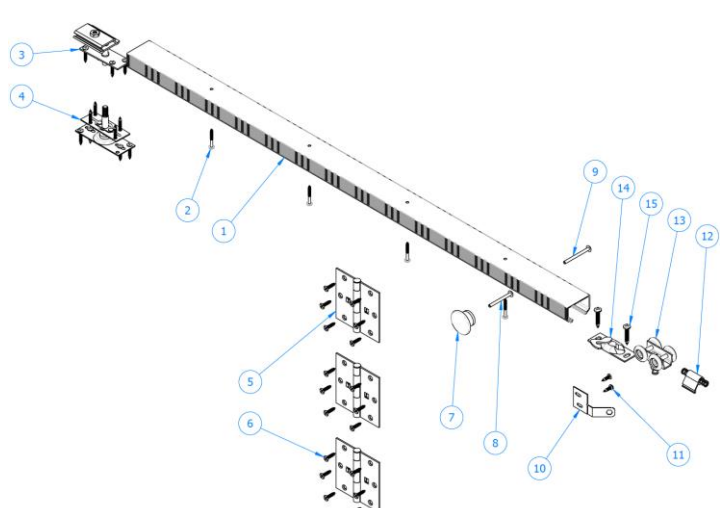


The **9570RC** is for 1-1/8" to 1-3/4" thick panels. Hardware is rated up 125lbs per panel pair. 36" is for 2-Panel Assembly. 48", 60", 72" and 96" are for 4-Panel Assembly.

Contents:	2-Pnl Qty:	4-Pnl Qty:	
<b>Track (9303HD)</b>			
1. Bi-Fold, By-Pass and Pocket Door Box Track	1	1	
2. #8 x 1-1/4" PPHW Track Screw	*	*	
<b>Bi-Fold Pivot Set</b>			
3. Top Pivot Assembly	1	2	
4. Bottom Pivot Assembly	1	2	
<b>3.5" x 3.5" Hinge (1741)</b>			
5. 3.5" x 3.5" Hinge (1741)	3	6	
6. #9 x 3/4" FPHW Hinge Screw	18	36	
<b>Bi-Fold Accessories Parts Bag</b>			
7. Wooden Knob	1	2	
8. #8 x 1-3/4" TPH Knob Screw	1	2	
9. #8 x 2" TPH Knob Screw	1	2	
10. Bi-Fold Aligner	1	2	
11. #8 x 5/8" PPHW Aligner Screw	2	4	
12. Bi-Fold Center Stop Bumper	1	2	
<b>4-wheel Hanger Parts Bag</b>			
13. 4-wheel Roller	1	2	
14. Hanger Plate	1	2	
15. M5.5 x 32mm PPHW Hanger Plate Screw	2	4	

\*Number of Panels and Track Screws are dependent on the Actual Track Length:

Actual Track Length	Number of Panels	Number of Track Screws
36"	2	4
48"	4	6
60"	4	6
72"	4	6
96"	4	8

# 1 Prepare the Finished Opening

PANEL HEIGHT = FINISHED OPENING HEIGHT - 2-7/8" ± 1/4"

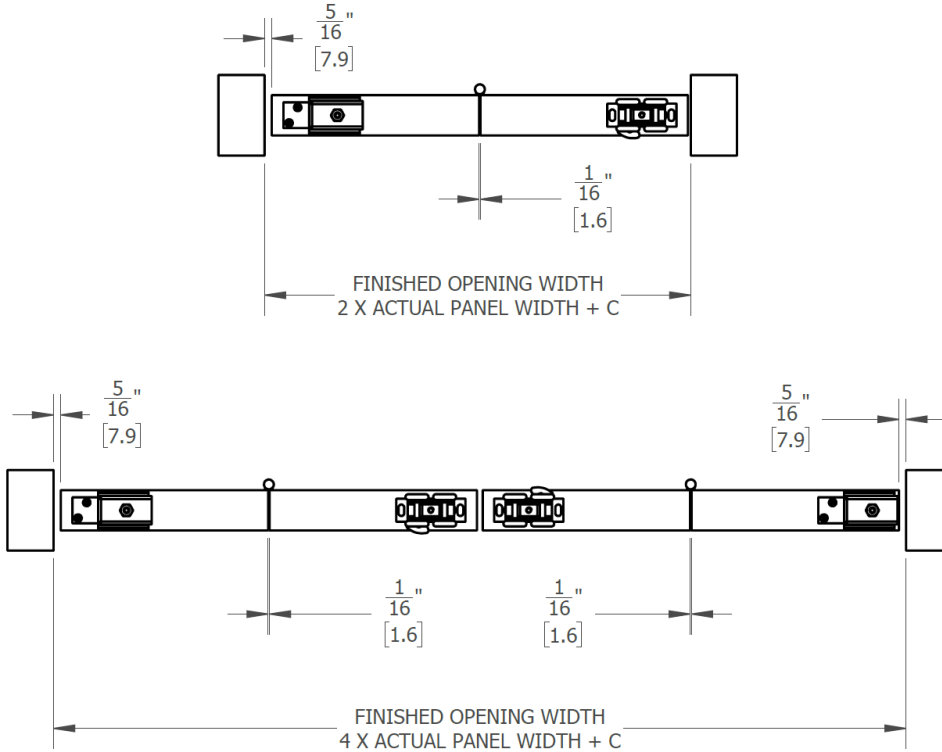


Figure 1: 2-Panel and 4-Panel Finished Opening Width

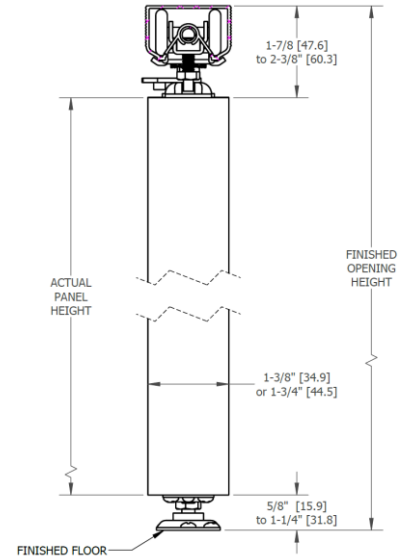


Figure 2: Finished Opening Height

Finished Opening Width "C" Values			
2-Panel		4-Panel	
1-3/8" Thick Panels or Less	1-3/4" Thick Panels	1-3/8" Thick Panels or Less	1-3/4" Thick Panels
3/8"	1/2"	3/4"	1"

## 2 Prepare the Top and Bottom Pivot Assembly

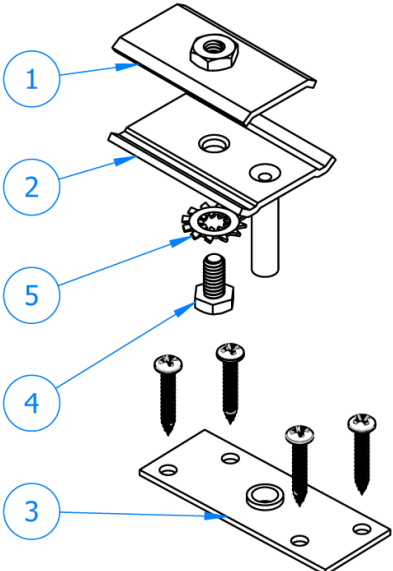
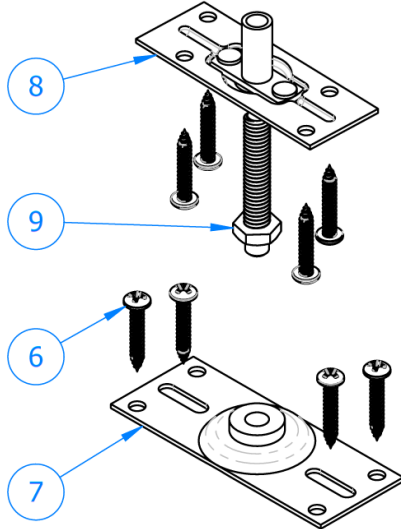
Bi-Fold Pivot Set (1-159-0010) Contents:	2-Pnl Qty:	4-Pnl Qty:		
1. Top Pivot Track Bracket - Top	1	2		
2. Top Pivot Track Bracket - Bottom	1	2		
3. Top Pivot Door Mounting Plate	1	2		
4. 1/4"-20 x 1/2" Top Pivot Track Bracket Bolt	1	2		
5. 1/4" Internal-External Lock Washer	1	2		
6. #8 x 1" PPHW Pivot Mounting Screw	12	24		
7. Bottom Pivot Floor Mounting Plate	1	2		
8. Bottom Pivot Door Mounting Plate	1	2		
9. 5/16"-18 x 1-9/16" Bottom Pivot Adjusting Bolt	1	2		

Figure 3: Top and Bottom Pivot Assembly

### 3 Install the Track and Hardware

- Track length should be 1/8" less than the finished opening width
- Place the Top Pivot Track Bracket - Top and 4-Wheel Roller loose in the track with the pivot bracket on the pivot side
- Center the track in the opening
- Secure the track with #8 x 1-1/4" PPHW screws
- Install the Top Pivot Track Bracket - Bottom, 1/4" Internal-External Lock Washer and 1/4"-20 x 1/2" Top Pivot Track Bracket Bolt onto the Top Pivot Track Bracket - Top
- Move the Top Pivot Bracket Assembly 2-5/16" from the Pivot Side Jamb and **loosely hand tighten**.  
 Note: This will enable it to slide freely on the track while setting the pivot side panel into the Bottom Pivot Floor Mounting Plate
- At the center of the jamb depth, 2-5/16" from the Pivot Side Jamb, secure the Bottom Pivot Floor Mounting Plate on to the floor with 2ea #8 x 1" PPHW screws as seen in Figure 5  
 Note: This will allow the Bottom Pivot Floor Mounting Plate to be adjusted after the door panels are placed

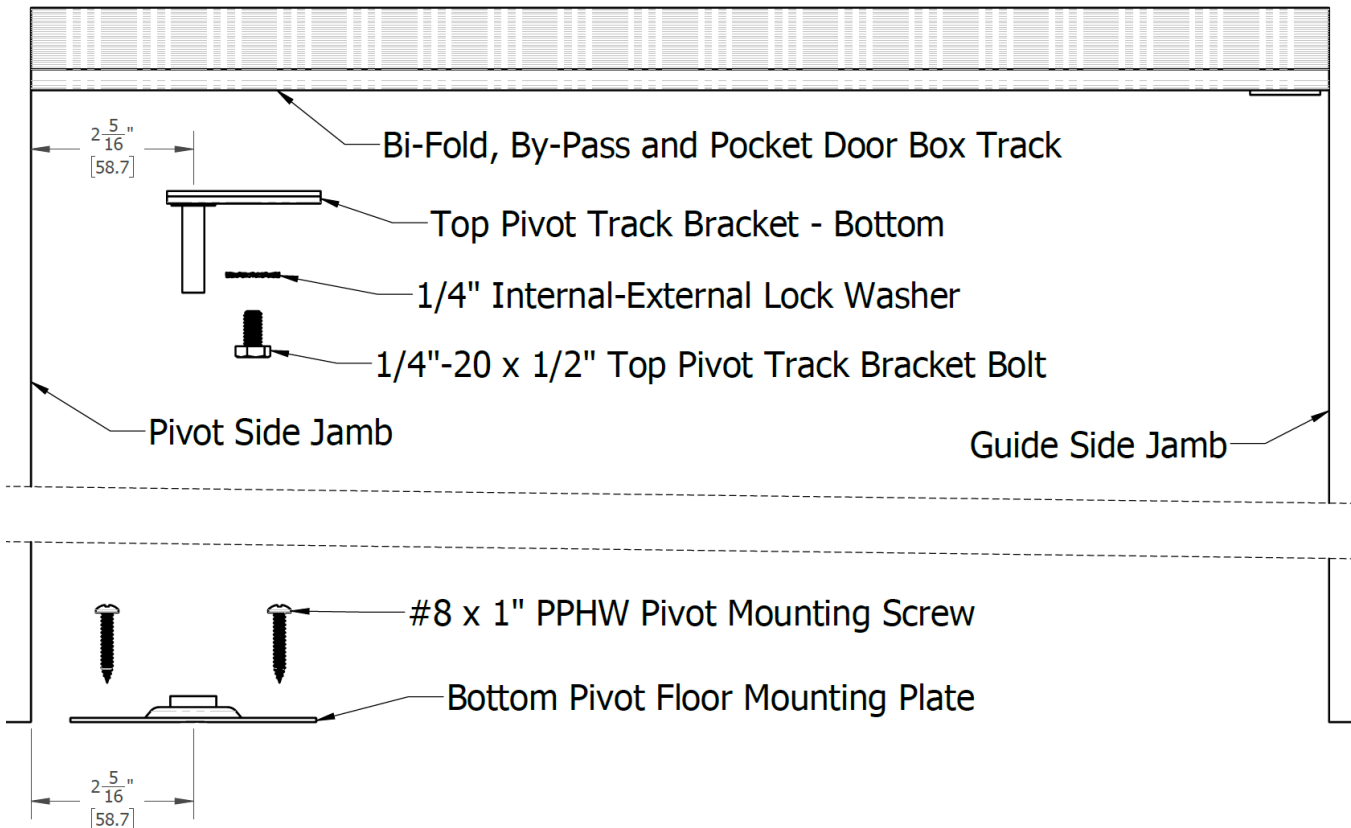


Figure 4

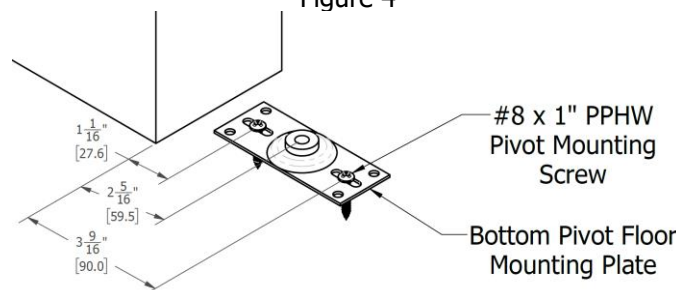


Figure 5

## 4 Prepare the Panels

- Drill a 1-3/4" deep 3/8" diameter hole 2" from the pivot side panel edge, at the center of the top and bottom panel edge thickness
- Insert the Bottom Pivot Door Mounting Plate's protruding cylinder in the bottom hole created in the previous step
- Position the Top Pivot Door Mounting Plate 2" from the pivot side panel edge, at the center of the top panel edge thickness
- Secure both the Top and Bottom Pivot Door Mounting Plates with #8 x 1" PPHW Screws
- Position the Hanger Plate 2" from the guide side panel edge, at the center of the top panel edge thickness
- Secure the Hanger Plate with M5.5 x 32mm PPHW Screws
- Mortise the 3.5" x 3.5" Hinges to the panels  
 Note: Ensure that the hinge barrels are on the back side of the door
- Secure the hinges with #9 x 3/4" FPHW Screws

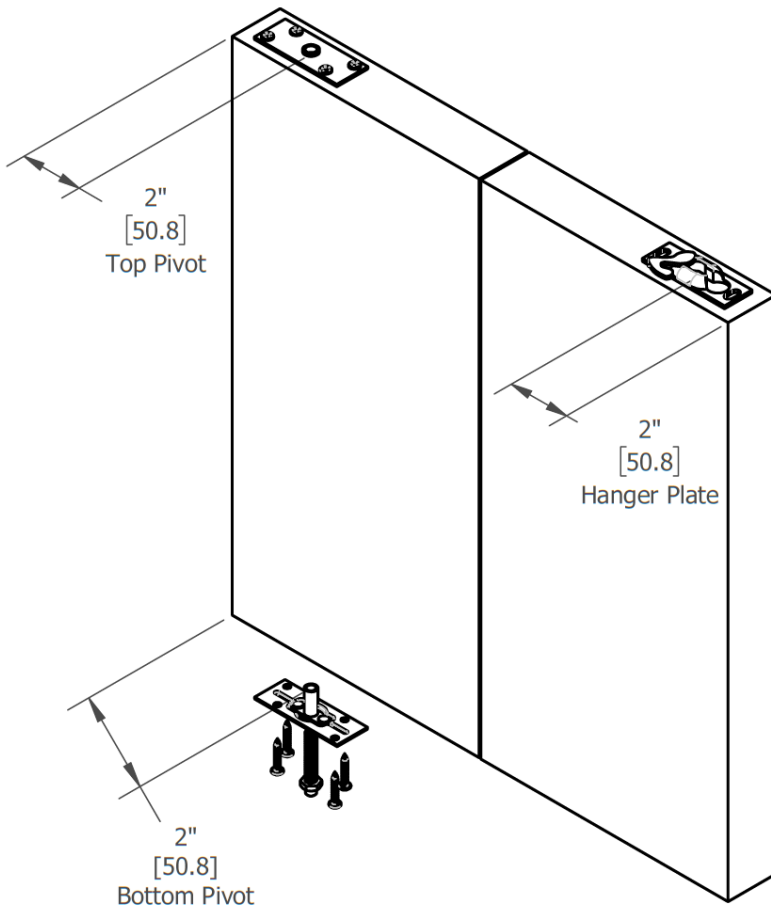


Figure 6

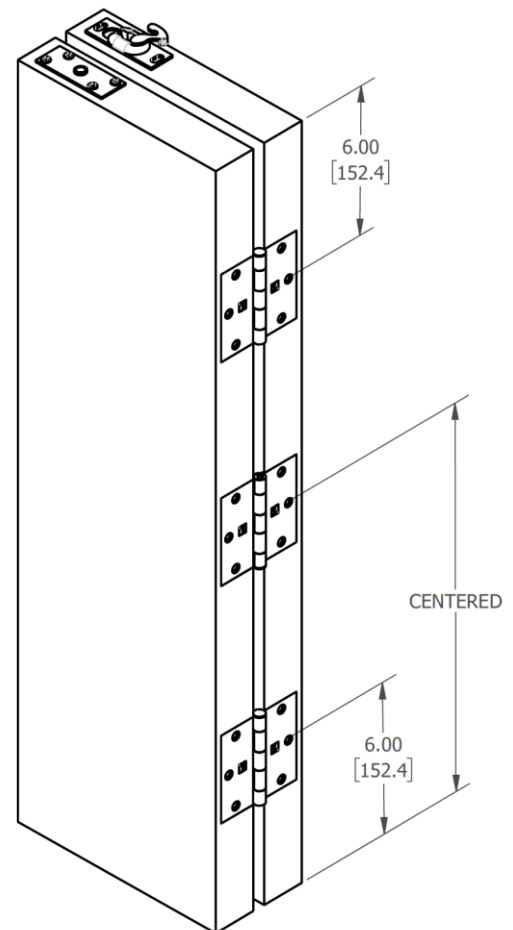


Figure 7: Hinge Locations

## 5 Hang the Doors

- Fold the doors together and engage the Top Pivot Door Mounting Plate into the Top Pivot Bracket
- Set the Bottom Pivot Adjusting Bolt into the Bottom Pivot Floor Mounting Plate  
 Note: The **Top Pivot Assembly must be loose** to slide freely on the track towards the Guide Side Jamb. This will safely set the Bottom Pivot Adjusting Bolt into the Bottom Pivot Floor Mounting Plate
- Slide the 4-Wheel Roller's bolt into the Hanger Plate and close the latch
- Move the Top Pivot Assembly left and right until the pivot side panel edge is parallel to the Pivot Side Jamb
- Tighten the Top Pivot Track Bracket Bolt
- Test the bi-fold door
- Adjust the Top and Bottom Pivot Assembly left or right if necessary
- Adjust the Bottom Pivot Adjusting Bolt and 4-Wheel Roller's bolt until the bottom door edge is  $\frac{3}{4}$ " from the finished floor
- Secure the Bottom Pivot Floor Mounting Plate with the remaining 2ea #8 x 1" PPHW screws  
 Note: Make sure to stagger the screws. Either place them on the top left corner hole and bottom left corner hole or vice versa as seen in Figure 3

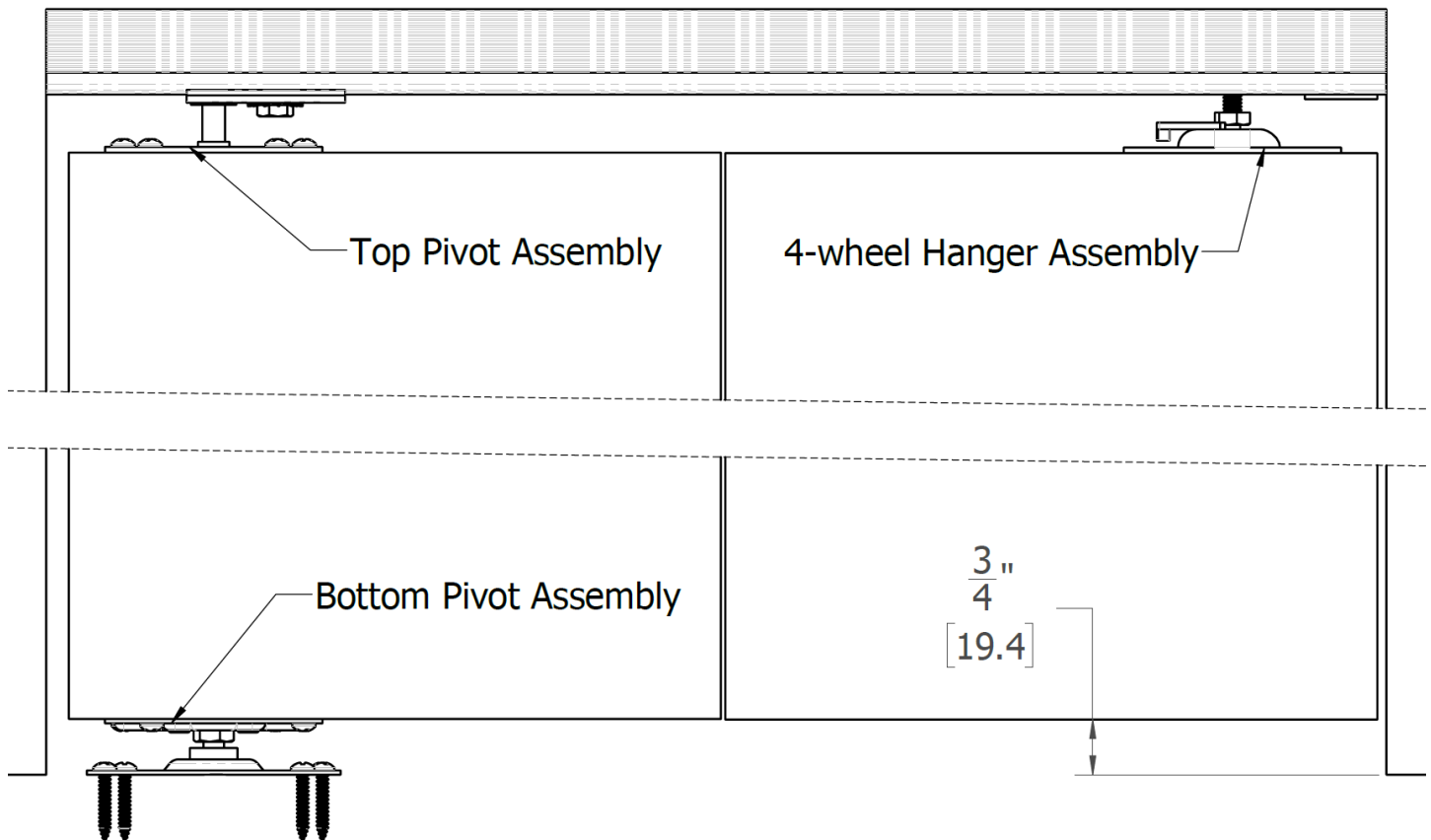


Figure 8

## 6 Install the Wooden Knob and Bi-Fold Aligner

- Install the wooden knob at the vertical centerline of the guide side door as seen on Figure 9  
 Note: Use #8 x 1-3/4" TPH Knob Screw for 1-3/8" Thick Panels  
 Use #8 x 2" TPH Knob Screw for 1-3/4" Thick Panels  
 Cut the #8 x 1-3/4" TPH Knob Screw to the appropriate length for 1-1/8" to 1-3/8" Thick Panels
- For 4-Panel Doors, install the Bi-Fold Aligner as seen on Figure 10

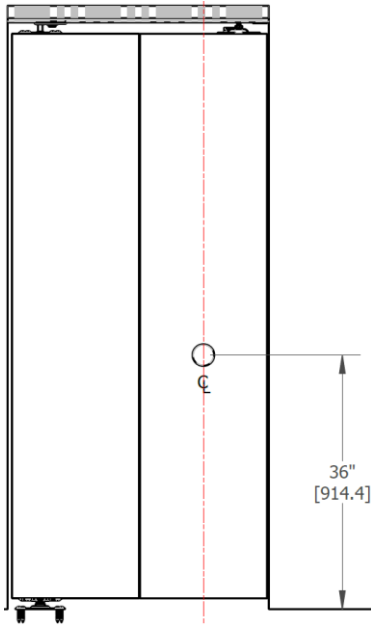


Figure 9: Wooden Knob Location

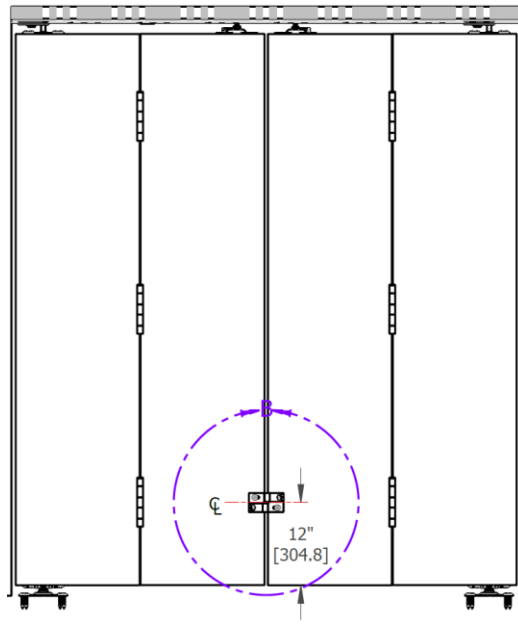
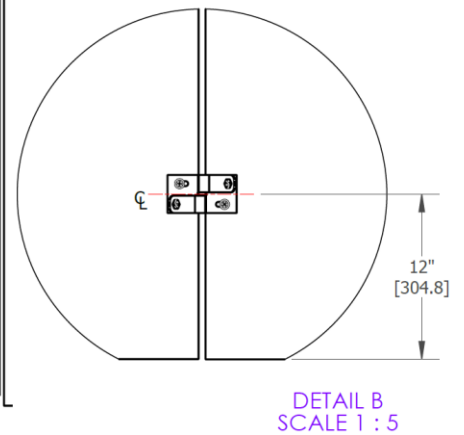


Figure 10: 4-Panel Bi-Fold Aligner Location



## 7 Attach the Bi-Fold Center Stop Bumper

- Attach the Bi-Fold Center Stop Bumper as seen on Figure 11

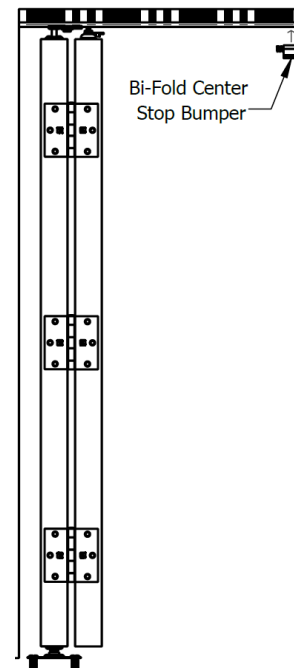


Figure 11