

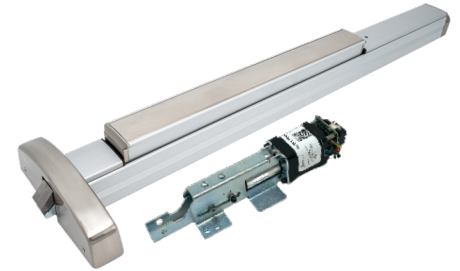
⚡ Always here to help ⚡

 **COMMAND  
ACCESS**

ELECTRIFIED EXIT DEVICE

## PD 29 SERIES

- **NARROW STILE GRADE 1 EXIT DEVICE**
- **ELECTRIFIED OPTIONS - MOTORIZED LATCH RETRACTION**
- **UL/ULC LISTED: LISTING FOR PANIC EXIT HARDWARE AND 3 HOUR RATING FOR FIRE EXIT HARDWARE**
- **ANSI/BHMA CERTIFIED: DEVICES ARE A156.3 GRADE 1.**



The Command Access PD29 narrow stile Grade 1 architectural exit devices. It is equipped with our motorized latch retraction allowing for them to be integrated into your access control or handicap access system. The PD29 is used on institutions and commercial buildings when heavy-duty, fire, and life safety operation is required. All MLR models come equipped with our PTS "push to set" technology. It carries our 3-Year "No-Hassle" Warranty, meaning we support you.

## FEATURES

- **Rugged, reliable, flexible, and simple design**
- **Patent Pending**
- **Quiet operation - large heavy-duty spring cushion quiets both the compression/extension of the push bar**
- **Internal compression spring ensures long lasting push bar return**
- **Engineered strong and overbuilt for the most demanding environments**
- **Durable, heavy-duty flush end cap is standard and resist prying**
- **Stands up to cart abuse, heavy-duty flush end cap and tapered pushbar designed to deflect hits and minimize damage**
- **Simple field door prep and installation**
- **Dogging holds bar in a retracted position nearly flush with head cover and rail**
- **Hex Key provided to lock and unlock the device**
- **No exposed screws on back of bar**
- **True 2-3/4" backset (with 5/8" frame stop and 1/8" door gap)**
- **Wood and machine screws included with each device**
- **Devices and trim are non-handed**
- **Designed & Assembled in the USA**

## ACCESSORIES - Additional charges

- **Motorized Latch Retraction**
- **Request to Exit (REX) or Latchbolt Monitor LBM - Switch available factory installed**
- **Delayed Egress (Coming Soon)**
- **Alarm Kit (Coming Soon)**

U.S. Customer Support  
1-888-622-2377

[www.CommandAccess.com](http://www.CommandAccess.com)

Canada Customer Support  
1-855-823-3002

Command Access is not a licensee, or affiliated, associated or connected with Allegion, Assa Abloy, Stanley, Schlage, Falcon, Von Duprin, Dorma, Sargent, Corbin Russwin, Yale, Emtek, Adams Rite, Best, Precision, Arrow, Design Hardware, Cal Royal, Jackson, Kawneer, AHT, Marshall Best, Marks, Accurate, Baldwin, FSB, PDQ, Lawrence, Trans Atlantic, Hager, LSDA, General Lock, or Omnia or any of their subsidiaries or affiliates.



## SPECIFICATIONS

**Device Lengths:** (36") or (48")

**Minimum Stile Width:**  
PD29 - 2-1/8"

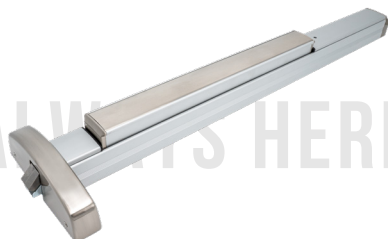
**Door Thickness:**  
1-3/4" -2" (Consult factory for other)

**Latch Bolt**  
Pullman Latch - Stainless steel dead locking  
with 3/4" throw

**Strikes:** 801 (Panic), 802 (Fire)

### Certification

- Listed for UL 305 "Panic", listed for UL 10C "Fire Exit Hardware" up to 3 hours.
- Certified to ANSI/BHMA A156.3 Grade 1
- Approved for Florida HVHZ (High Velocity Hurricane Zone). +60/65
- FL #40297 +60/-65 psf 4080 16ga Single
- FL #40297 +50/-50 psf 4080 18ga Single
- Meets requirements of the Buy American Act
- Complies with ADA (Americans with Disabilities Act) and ICC/ANSI 117.1 for Accessible and Usable Buildings



### Dogging Options

Electrified Device do not maintain mechanical dogging but can be electronically dogged.

Hex Key Dogging Standard Mechanical devices

Cylinder Dogging optional

Fire Exit device - No Dogging (ND)

### Fasteners

Panic Device - Includes machine & wood screws furnished standard.

Sex nuts and bolts (SNB) can be ordered separately

### Mounting Height Projection

Standard device centre line from finished floor is 40" (1016mm)

Push bar Neutral 3-1/16" (78mm). Push bar Depressed 2-19/32" (66mm)

### Door Height

Our standard and fire rated vertical rod exit device accommodates up to 10' (3048mm) doors. Fire rated devices may be ordered for up to 10' (3048mm) fire exit doors. Specify door height if greater than standard sizes when ordering.

**Note:** For fire rated devices consult door manufactures literature for maximum allowable door height and width.

⚡ Always here to help ⚡

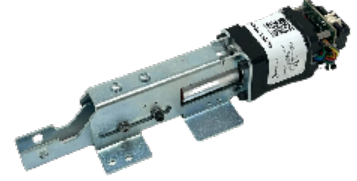
 **COMMAND  
ACCESS**  
ELECTRIFIED EXIT DEVICE

### Motorized Latch Retraction

- Voltage Range - 24 to 26.5VDC
- System Protection - Unit shutdown when voltage exceeds 28VDC
- Standard - Average Current Peak: 900MA
- Average Current Hold: 215MA
- PTS Adjustment – Approx. 1/4"

### Cutdown Details

- For Motorized Latch Retraction -
- 36" - 2"
  - 48" - 8"



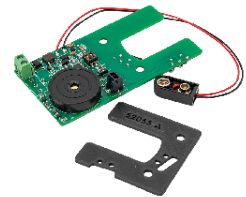
### Mechanical Exit Trim

- A narrow profile Escutcheon for the PD29/30 Device
- Avaliabel in 6 lever styles, and in 6 functions
- Use with narrow stile devices or a wide stile device when a slimmer look is desired
- Escutcheon Size - 1 - 13/16" x 9"



### Alarm Kit:

- Alarm Mode: Unit can be configured to auto silence the alarm after 7, 3 or 1 minute.
- Armed State: Red LED blinks every 10-seconds to indicate unit is armed.
- Low Battery: Siren will intermittently chirp when battery is low (<7VDC). Siren chirps regardless of arming state.
- Battery Life: 1-year life expectancy in armed, unactuated state.
- Siren Intensity: 95dB @ 4in
- Operating Temperature: 0 C – 49 C
- Max Relative Humidity: 85% (non-condensing)
- Included Decal: "EMERGENCY EXIT ONLY – ALARM WILL SOUND"
- Latchbolt Monitor: Standard for SVR device



How to order: Specify A for alarm kit or A-HW alarm kit with optional hardwire and relay output

Optional Rim Latchbolt Monitor: Adds latchbolt monitor. When armed, either the touch bar or latchbolt monitor actuate siren.

Optional Relay Output: Adds a Single Pole Double Throw (SPDT) relay and hardwire power input to the unit. When armed, relay state changes when the touch bar is depressed. Can be used with access control systems. Dry contact SPDT rated 125VAC/ 60VDC with 9VDC coil

ALWAYS HERE TO HELP



### **Delayed Egress:**

**Voltage Range - 24 to 26.5VDC**

- **Standard - Average Current Peak: 1A**
- **Average Current Hold: 215MA**

### **Inputs & Outouts**

- **Fire Alarm (tied into Power Supply)**
- **Inhibit Input**
- **Door Position Switch**
- **Latchbolt Monitor Switch**
- **Gang Bus**
- **Request to Exit Switch**
- **Alarm Relay Contact**

### **Delays**

- **Release Delay -** When the Push Pad is actuated and the Nuisance Delay expires, the device enters the Release Delay with alarm. During the Release Delay, the Internal Alarm sounds, the Alarm Relay activates, and the device remains locked for 15 seconds or 30 seconds (less any time already elapsed during the Nuisance Delay). Once started, the Release Delay sequence will not stop and the devices will unlock.
- **Nuisance Delay -** The Nuisance Delay is the brief time a Push Pad can be accidentally actuated before the Release Delay sequence starts. If the Nuisance Time is set to 0 seconds the device will enter Release Delay as soon as the Push Pad is actuated (when armed). Setting the Nuisance Time to 1.5 seconds allows the Push Pad to be pressed for 1 to 3 seconds before the device goes into Release Delay. If the Nuisance Audio and Nuisance Delay are both on, the Internal Alarm will pulse during the Nuisance Delay. The Alarm Relay does not activate during the Nuisance Delay. If the Push Pad is released before the Nuisance Delay expires, the device will remain armed
- **Re-arm Delay -** The amount of time after the Key Switch or Inhibit Input is deactivated to when the device rearms. It is designed to give someone time to pass through the door before rearming occurs. The Rearm Time can be changed via the onboard dip switch settings from 0,1,5, & 15 seconds. Re-arm countdown begins once door is closed & all switches are re-engaged. If the Rearm Time is set and a DPS is used, if the door is opened re-arm time will not begin until door is closed. If the door never opens, the device will rearm after specified duration. If not using a DPS, the device will begin rearm sequence if door is opened.

### **Interface**

- **Key Switch or remote arming capability -** Provides the means to Arm or Disarm/Reset the device. Turning the Key
- **Switch clockwise initiates the Rearm Delay, and turning the Key Switch counter-clockwise Disarms/Resets the device. The Key Switch allows the key to be removed in either the Arm or the Disarm/Reset position.**
- **Status Indicator -** The red Status Indicator flashes slow if the device is armed, flashes fast in an alarmed mode, is off when inhibited and on solid during Rearm Delay.
- **Internal Alarm -** The Internal Alarm sounds continuously during and after a fire alarm or a Release Delay, pulses fast during the Nuisance Delay or a tamper and pulses slow during Disarmed Powerup mode.

### **Settings**

- **Armed Power Up -** A power disruption & power return will put the device in armed, locked mode.
- **Trim Fail Safe/Fail Secure -** Not currently Available, must be powered separately. REE switch can be used to by-pass armed device.

### **Cylinders**

- **Cylinders -** Not furnished with device. Use 1-1/8" mortise cylinder with compression ring & straight cam.

⚡ Always here to help ⚡



**MODELS AVAILABLE:**

<b>PD29-M</b>	Complete Panic Narrow Stile Exit Device, non-handed. Motor Driven-EU 24VDC
<b>PD29F-M</b>	Complete Fire Rated Narrow Stile Exit Device, non-handed. Motor Driven-EU 24VDC
<b>PD30</b>	Complete Panic Narrow Stile Exit Device, non-standard. Mechanical
<b>PD30F</b>	Complete Fire Rated Narrow Stile Exit Device, non-handed. Mechanical

**How to ORDER**

**EXAMPLE:** PD29F-M RIM 24V 36" 622 REX

CATEGORY	SERIES	RATING	FUNCTION	DEVICE TYPE	VOLTAGE	DOOR WIDTH	FINISH	HARDWARE OPTIONS	OPTIONS
PD	29- NARROW	BLANK - PANIC	M- FAIL SECURE (EU)	RIM	24V	36"	605*	BS - BLADE STOP STRIKE	REX- REQUEST TO EXIT SWITCH
	30 - NARROW MECHANICAL	F - FIRE RATED	A- ALARM	SVR		48"	606*	DD - DOUBLE DOOR STRIKE	LBM- LATCHBOLT MONITOR SWITCH
			AHW- ALARM HARD WIRED	CVR			613	LBR - LESS BOTTOM ROD (SVR/CVR)	QC/CON/BC - MOLEX CONNECTORS - SPECIFY BRAND
			DE- DELAYED EGRESS				622	LBR-FP - LESS BOTTOM ROD WITH FIRE PIN (SVR/CVR)	
			BLANK- MECHANICAL				625*	WS - WINDSTORM RATED (RIM/SVR)	
					626/630	7 - 7' DOOR			
							8 - 8' DOOR		
							10 - 8'-10' DOOR		

\*SELECT FINISHES MAY HAVE LONGER LEAD TIMES

\*MULTIPLE SELECTIONS ALLOWED  
\*DOGGING ONLY APPLIES TO MECHANICAL DEVICES

**ET27/28 TRIMS AVAILABLE:**

**LEVERS**



**NEED A LOCKING HARDWARE POWER SUPPLY?**

RECOMMENDED LOCKING HARDWARE POWER SUPPLIES:

- PS204/ PS204B
- PS210
- PS220/220B
- PS440B
- PS480B

