

PD28-RIM - PANIC RIM EXIT DEVICES WITH 2700 NON-LABELLED MULLION AND PANIC STRIKE

TEMPLATE: CAT-9707
REV. 0 04-27-32

PD28 SERIES EXIT DEVICES USING SNB OR SURFACE MOUNT FASTENERS

DEVICE

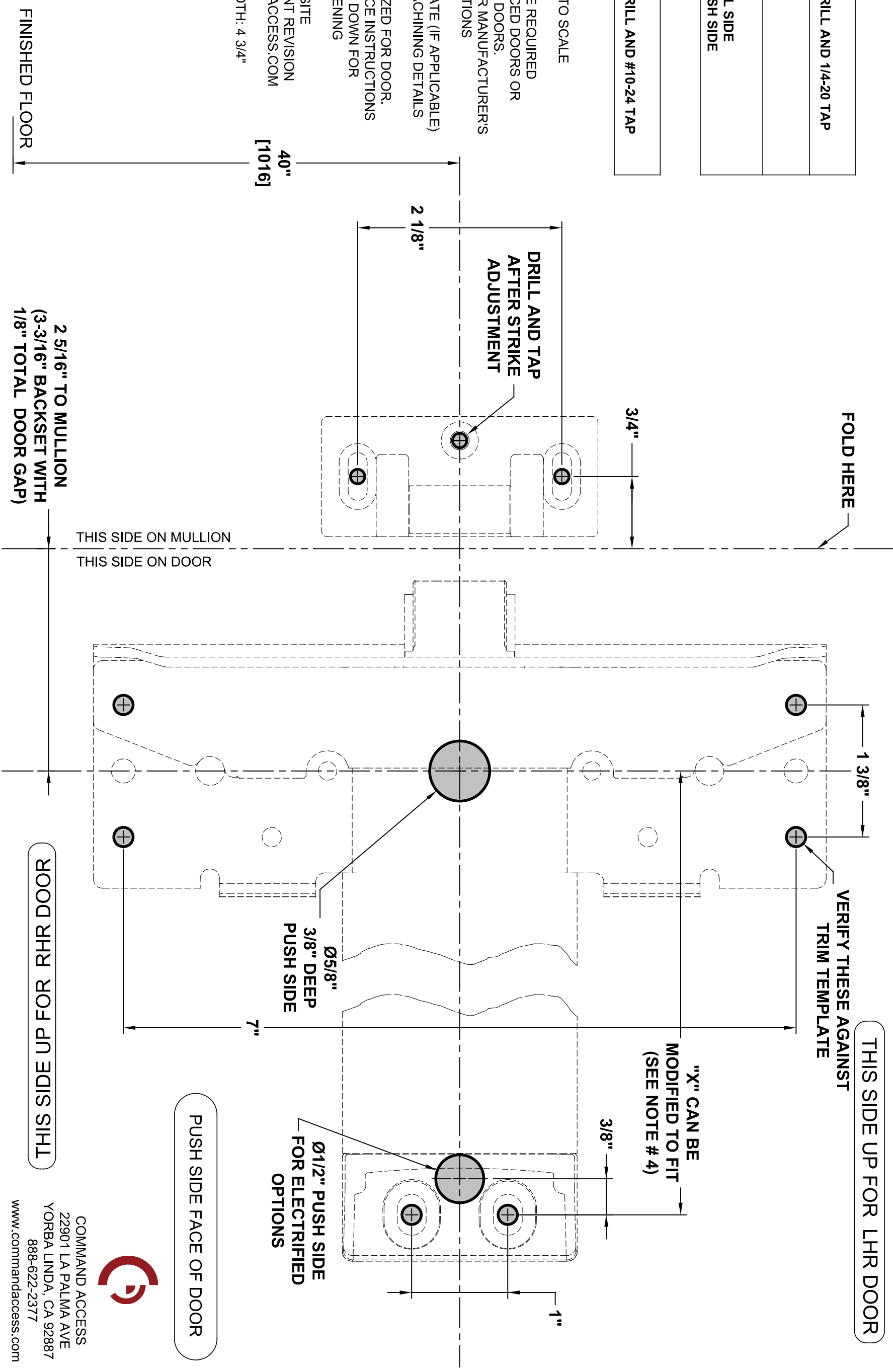
MACHINE SCREWS: USE #7 OR 13/64" DRILL AND 1/4-20 TAP
WOOD SCREWS: USE 5/32" DRILL
SEX NUTS: USE 3/8" DRILL PULL SIDE USE 9/32" DRILL PUSH SIDE

STRIKE

MACHINE SCREWS: USE #25 OR 5/32" DRILL AND #10-24 TAP

NOTES:

1. VERIFY PRINTED TO SCALE
2. SEX NUTS MAY BE REQUIRED FOR UNREINFORCED DOORS OR COMPOSITE FIRE DOORS. CONSULT DOOR MANUFACTURERS RECOMMENDATIONS
3. SEE TRIM TEMPLATE (IF APPLICABLE) FOR RELATED MACHINING DETAILS
4. DIMENSION "X" SIZED FOR DOOR. REFER TO DEVICE INSTRUCTIONS WHEN CUTTING DOWN FOR NARROWER OPENING
5. CHECK CAT WEBSITE FOR MOST RECENT REVISION WWW.COMMANDACCESS.COM
6. MINIMUM STILE WIDTH: 4 3/4"



COMMAND ACCESS
22901 LA PALMA AVE
YORBA LINDA, CA 92887
888-622-2377
www.commandaccess.com