

# PD28-RIM - PANIC & PD28F-RIM - FIRE LABELED RIM EXIT DEVICES WITH STANDARD ROLLER STRIKE

TEMPLATE: CAT-9700  
REV. 0 04/27/23

## PD28 SERIES EXIT DEVICES USING SNB OR SURFACE MOUNT FASTENERS

### DEVICE

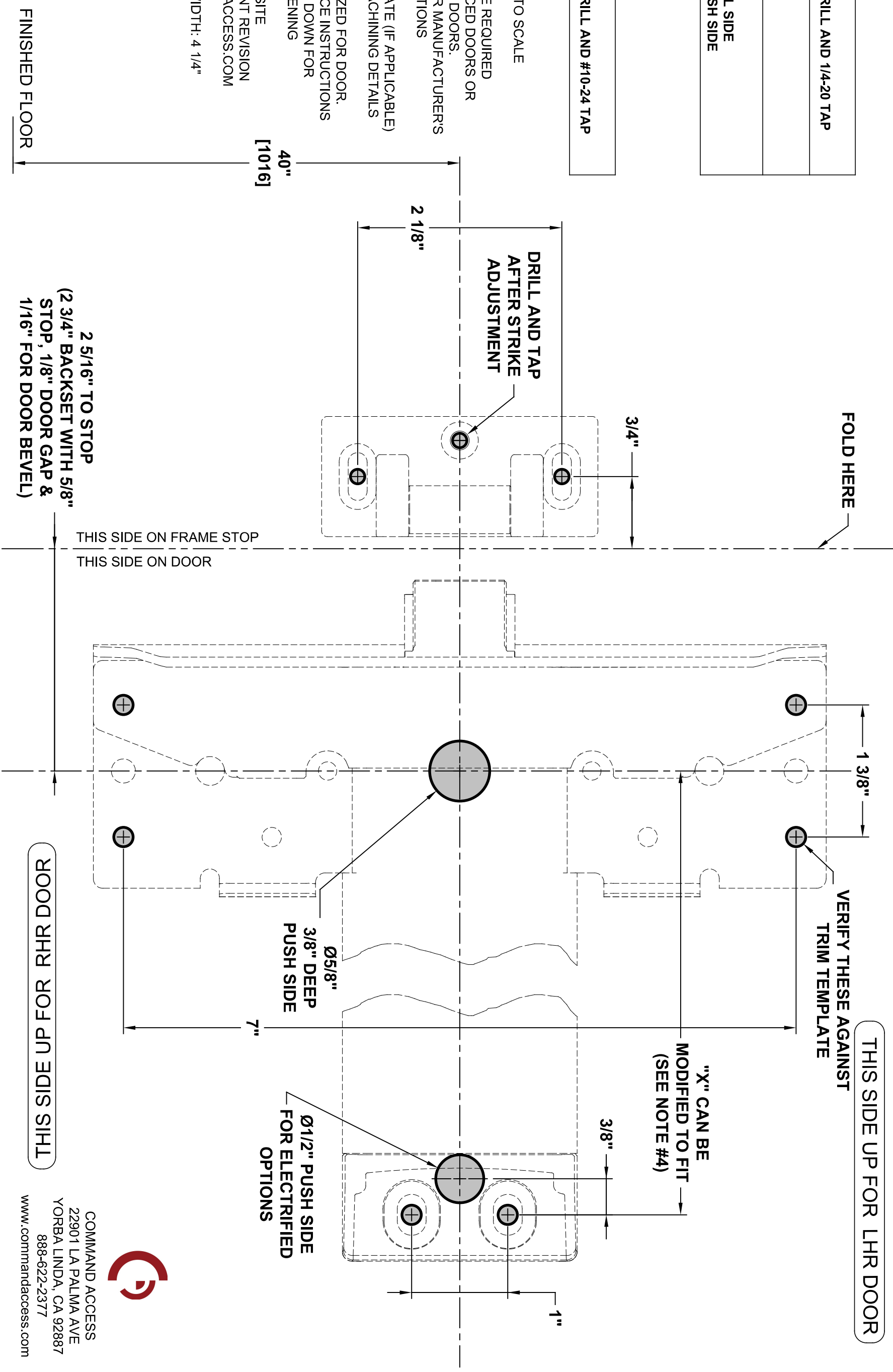
<b>MACHINE SCREWS:</b> USE #7 OR 13/64" DRILL AND 1/4-20 TAP
<b>WOOD SCREWS:</b> USE 5/32" DRILL
<b>SEX NUTS:</b> USE 3/8" DRILL PULL SIDE USE 9/32" DRILL PUSH SIDE

### STRIKE

**MACHINE SCREWS:**  
USE #25 OR 5/32" DRILL AND #10-24 TAP

### NOTES:

1. VERIFY PRINTED TO SCALE
2. SEX NUTS MAY BE REQUIRED FOR UNREINFORCED DOORS OR COMPOSITE FIRE DOORS. CONSULT DOOR MANUFACTURER'S RECOMMENDATIONS
3. SEE TRIM TEMPLATE (IF APPLICABLE) FOR RELATED MACHINING DETAILS
4. DIMENSION "X" SIZED FOR DOOR. REFER TO DEVICE INSTRUCTIONS WHEN CUTTING DOWN FOR NARROWER OPENING
5. CHECK CAT WEBSITE FOR MOST RECENT REVISION [WWW.COMMANDACCESS.COM](http://WWW.COMMANDACCESS.COM)
6. MINIMUM STILE WIDTH: 4 1/4"



COMMAND ACCESS  
22901 LA PALMA AVE  
YORBA LINDA, CA 92887  
888-622-2377  
[www.commandaccess.com](http://www.commandaccess.com)