

CVR LATCH - WOOD DOOR

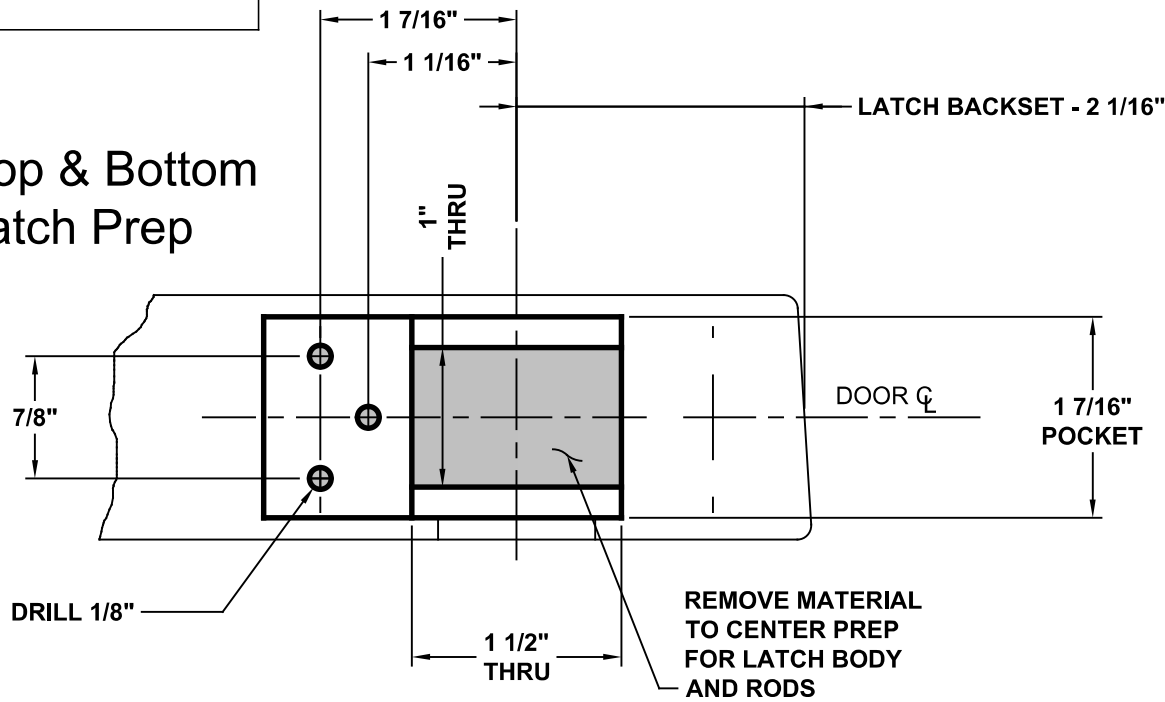
FOR PD28 SERIES EXIT DEVICES

TEMPLATE: CAT-9711
REV. 0 04-27-23

TOP LATCH

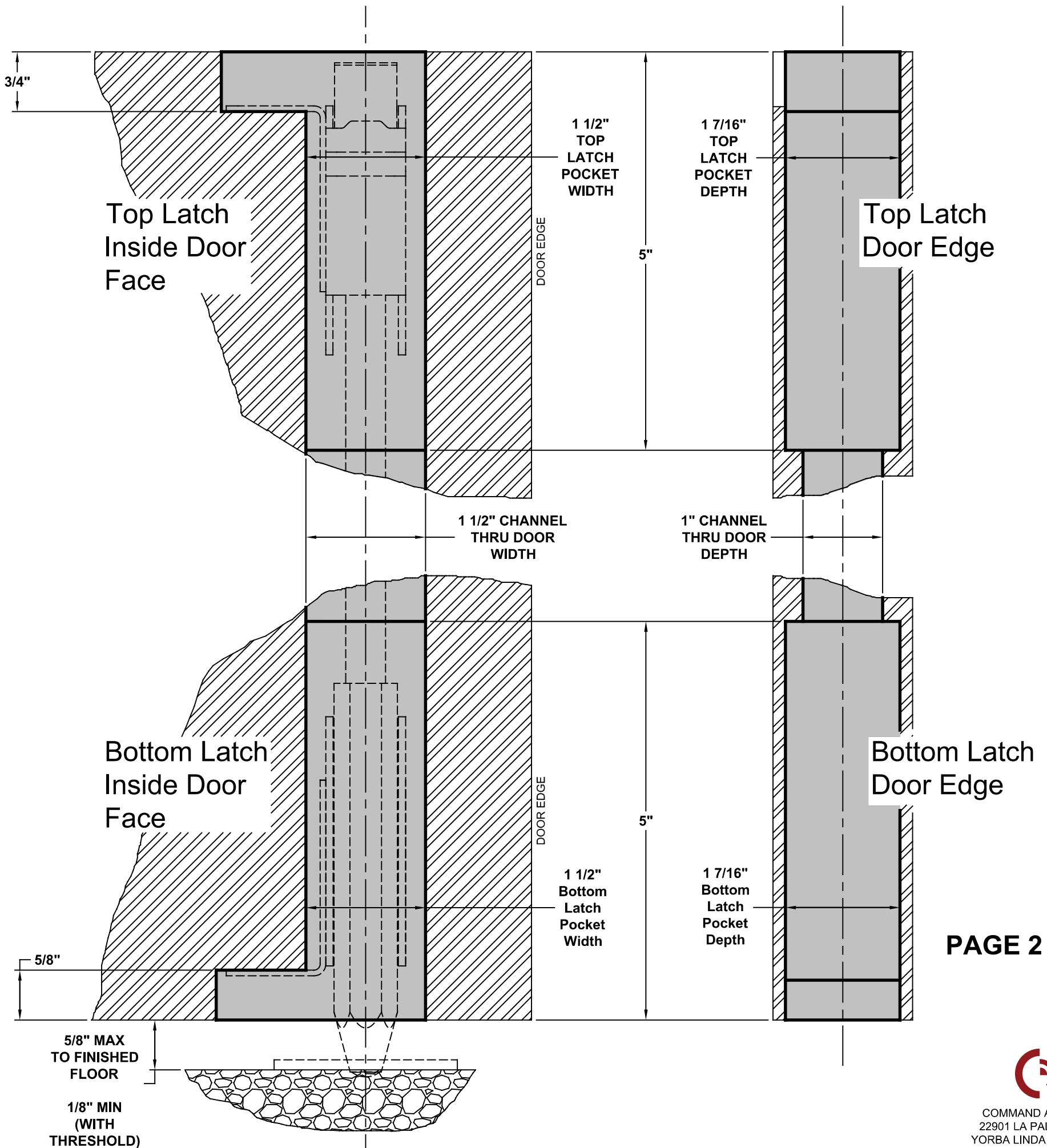
WOOD SCREWS:
1/8" DRILL

Top & Bottom Latch Prep



NOTES:

1. THIS PAGE NOT TO SCALE
2. BOTTOM LATCH LOCATION ASSUMES TYPICAL $5/8"$ UNDERCUT.
 - a. BOTTOM OF DOOR TO FINISHED FLOOR TO BE $5/8"$ MAX.
 - b. MINIMUM $1/8"$ GAP FROM $1/2"$ THRESHOLD.
 - c. FOR $1/2"$ THRESHOLD, USE UPPER PIN HOLE IN BOTTOM ROD.
3. CHECK PDQ WEBSITE FOR MOST RECENT REVISION WWW.PDQLOCKS.COM



PAGE 2 OF 3



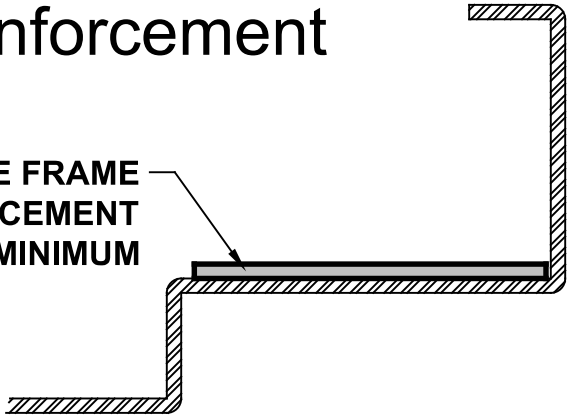
COMMAND ACCESS
22901 LA PALMA AVE
YORBA LINDA, CA 92887
888-622-2377
www.commandaccess.com

TOP STRIKE

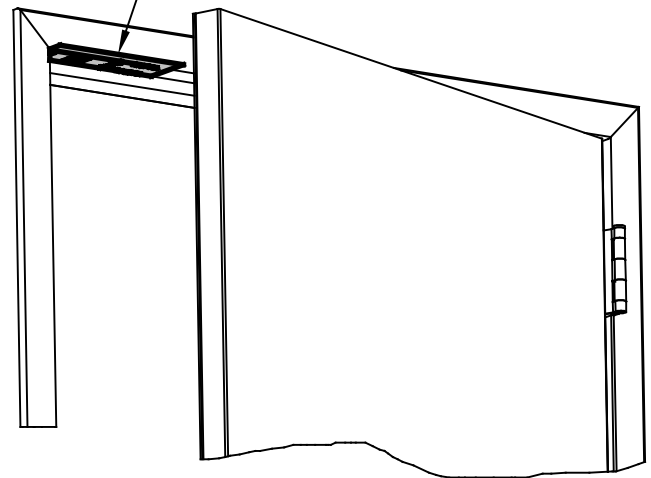
MACHINE SCREWS:
USE #25 OR 5/32" DRILL & #10-24 TAP

Top Strike Frame Reinforcement

14 GAUGE FRAME REINFORCEMENT MINIMUM



CUT TEMPLATE, PLACE ON FRAME AGAINST DOOR STOP

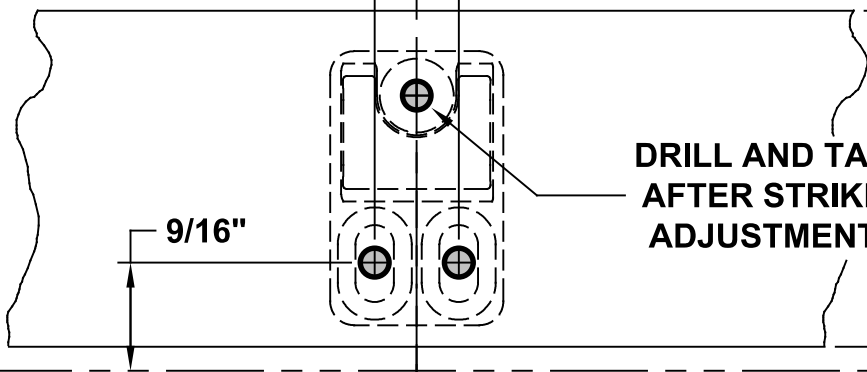


LATCH CENTERLINE

7/16"

PULL SIDE DOOR EDGE

DETACH HERE, PLACE ABOVE DOOR & AGAINST STOP



DRILL AND TAP AFTER STRIKE ADJUSTMENT

Top Strike Frame Prep

PUSH SIDE DOOR EDGE

DETACH HERE & PLACE ON FLOOR

PULL SIDE DOOR EDGE

Ø1" 3/4" DEEP

7/8"

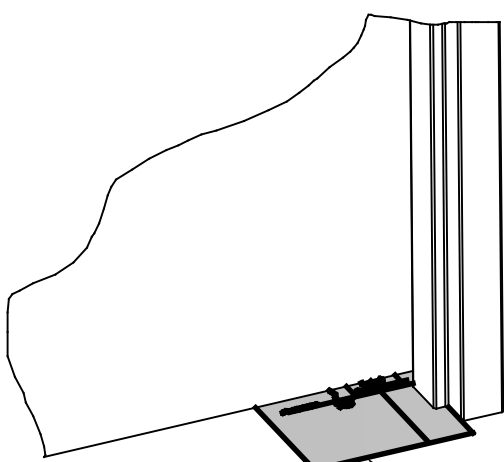
PUSH SIDE DOOR EDGE

Ø1/4 1" DEEP FOR INCLUDED ANCHOR

1 3/4"

Bottom Strike Floor Prep

LATCH CENTERLINE



CUT TEMPLATE PLACE ON FLOOR ALIGNED WITH DOOR

