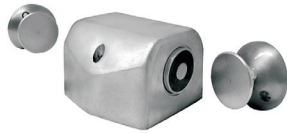




2801



2802



2804



2805



2806



2810



2860



2863



2870

## 2800 Series Electromagnetic Door Holders

DynaLock 2800 Series Electromagnetic Door Holders accept Tri-Voltage, 12VDC, 24VAC/VDC, or 120VAC input (Model 2810 is 24VAC/VDC, only). Standard models are offered for single or double doors and deliver 30-45 lbs. holding force. High-security Model 2810 delivers 400 lbs. holding force.

CURRENT DRAW	VOLTAGE
0.060 AMPS	12VDC
0.030 AMPS	24VAC/VDC
0.105 AMPS	24VAC/VDC (2810)
0.030 AMPS	120VAC



MODEL	PRODUCT	WEIGHT
<b>2801</b>	Floor Mount, Single Door	4.2 Lbs.
<b>2802</b>	Floor Mount, Double Door	6.1 Lbs.
<b>2803</b>	Flush Wall Mount, 1" Extended Armature	2 Lbs.
<b>2804</b>	Flush Wall Mount, Standard Armature	2 Lbs.
<b>2805</b>	Surface Wall Mount	2.5 Lbs.
<b>2806</b>	Low Profile Wall Mount	2.5 Lbs.
<b>2810</b>	Surface Wall Mount, 400 lbs. Holding Force	4.9 Lbs.

ACCESSORIES	PRODUCT	WEIGHT
<b>2860</b>	Door Armature & Base, Replacement	.5 Lbs.
<b>2861</b>	Armature Extension, 1/2"	.1 Lbs.
<b>2862</b>	Armature Extension, 3/4"	.1 Lbs.
<b>2863</b>	Armature Extension, 1"	.1 Lbs.
<b>2864</b>	Armature Extension, 2"	.1 Lbs.
<b>2865</b>	Armature Extension, 4"	.2 Lbs.
<b>2866</b>	Armature Extension, 6"	.3 Lbs.
<b>2870</b>	Armature Swivel Extension	.1 Lbs.

